

Leave 3" opening here.

CAT
Cut 2.
With WRONG SIDES together, sew with a generous 1/4" seam leaving at least a 3" opening where indicated. Back tack beginning and ending of opening. Please do not change the size of the critter. Please pink the edges.



Leave 3" opening here.

RABBIT

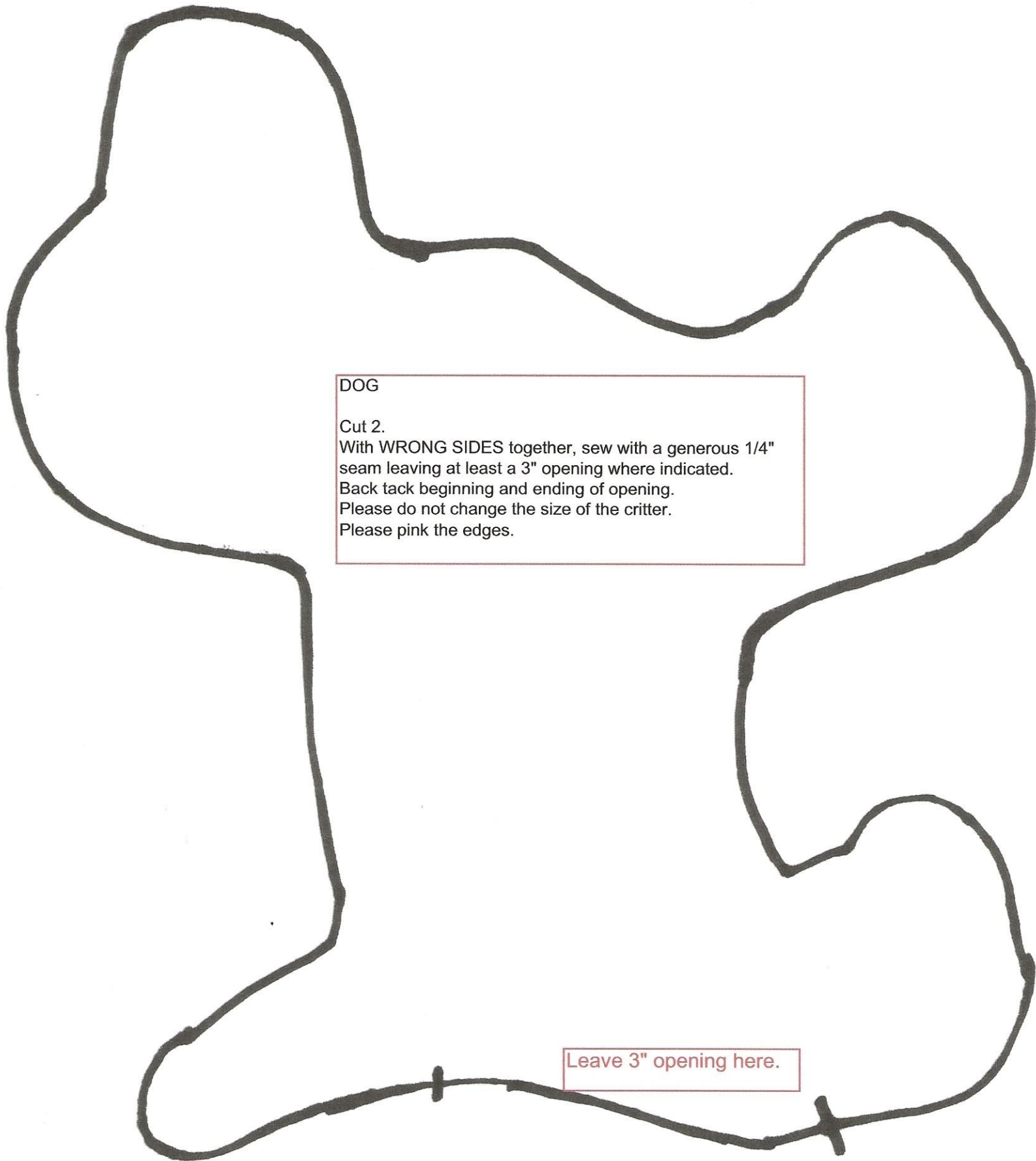
Cut 2.

With **WRONG SIDES** together, sew with a generous 1/4" seam leaving at least a 3" opening where indicated.

Back tack beginning and ending of opening.

Please do not change the size of the critter.

Please pink the edges.



DOG

Cut 2.

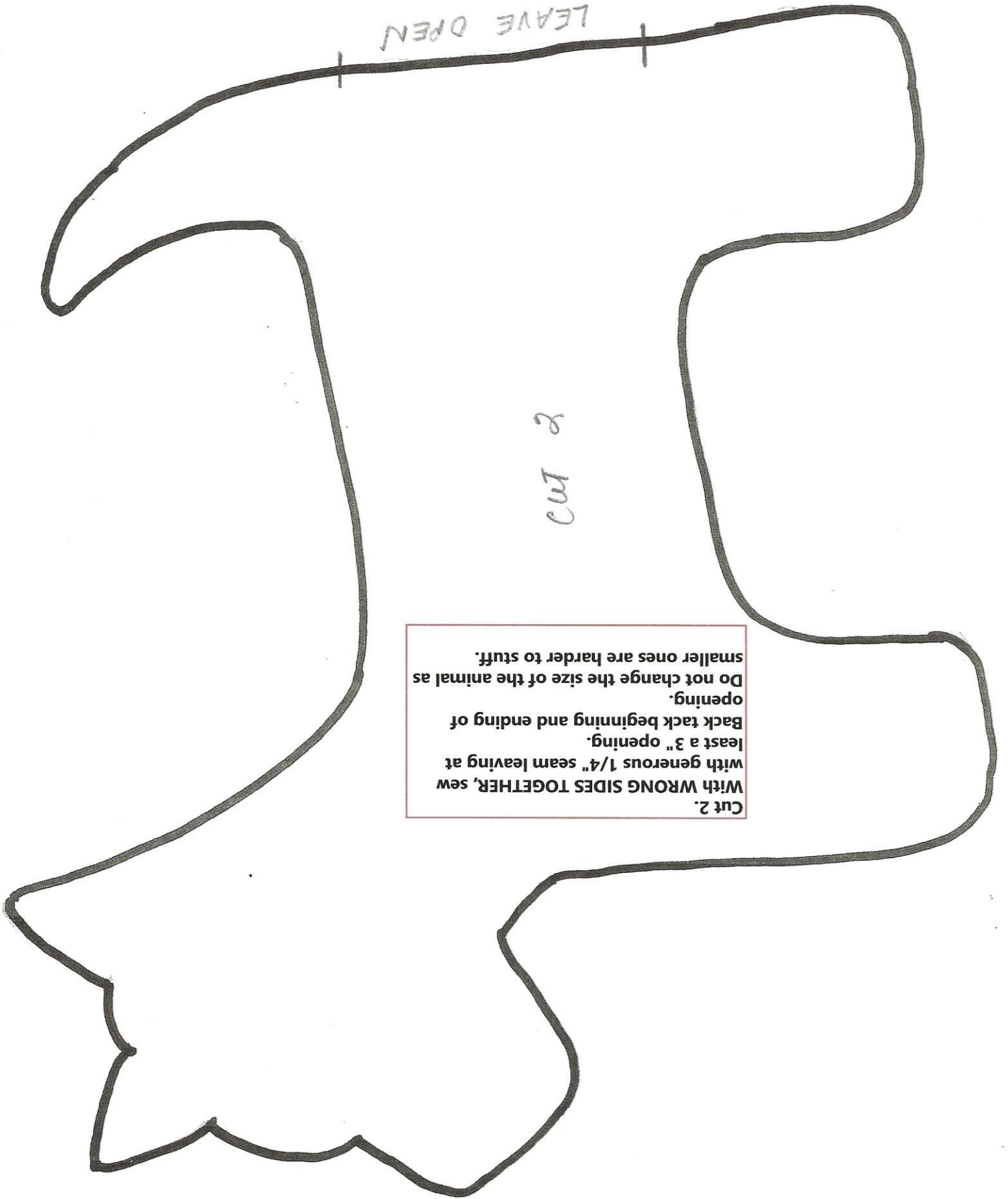
With WRONG SIDES together, sew with a generous 1/4" seam leaving at least a 3" opening where indicated.

Back tack beginning and ending of opening.

Please do not change the size of the critter.

Please pink the edges.

Leave 3" opening here.



LEAVE OPEN

cut 2

Cut 2.
With WRONG SIDES TOGETHER, sew
with generous 1/4" seam leaving at
least a 3" opening.
Back tack beginning and ending of
opening.
Do not change the size of the animal as
smaller ones are harder to stuff.

Cut 2.
With **WRONG SIDES TOGETHER**,
sew with generous 1/4" seam
leaving at least a 3" opening.
Back tack beginning and ending of
opening.
Do not change the size of the
animal as smaller ones are harder to
stuff.

PIG
CUT 2

LEAVE OPEN FOR TURNING

Cut 2.

With WRONG SIDES TOGETHER, sew with generous 1/4" seam leaving at least a 3" opening.

Back tack beginning and ending of opening.

Do not change the size of the animal as smaller ones are harder to stuff.

COW

CUT 2

